



**U.S. ARMY CORPS OF ENGINEERS
REGULATORY PROGRAM
APPROVED JURISDICTIONAL DETERMINATION FORM (INTERIM)
NAVIGABLE WATERS PROTECTION RULE**

I. ADMINISTRATIVE INFORMATION

Completion Date of Approved Jurisdictional Determination (AJD): 4/26/2021
 ORM Number: SWF-2021-00179
 Associated JDs: N/A
 Review Area Location¹: State/Territory: TX City: Temple County/Parish/Borough: Bell
 Center Coordinates of Review Area: Latitude 31.010400 Longitude -97.314340

II. FINDINGS

A. Summary: Check all that apply. At least one box from the following list MUST be selected. Complete the corresponding sections/tables and summarize data sources.

- The review area is comprised entirely of dry land (i.e., there are no waters or water features, including wetlands, of any kind in the entire review area). Rationale: There are no water features in the evaluation area/parcel that meet the definition of waters of the US.
- There are “navigable waters of the United States” within Rivers and Harbors Act jurisdiction within the review area (complete table in Section II.B).
- There are “waters of the United States” within Clean Water Act jurisdiction within the review area (complete appropriate tables in Section II.C).
- There are waters or water features excluded from Clean Water Act jurisdiction within the review area (complete table in Section II.D).

B. Rivers and Harbors Act of 1899 Section 10 (§ 10)²

t§ 10 Name	§ 10 Size		§ 10 Criteria	Rationale for § 10 Determination
N/A.	N/A.	N/A.	N/A.	N/A.

C. Clean Water Act Section 404

Territorial Seas and Traditional Navigable Waters ((a)(1) waters): ³				
(a)(1) Name	(a)(1) Size		(a)(1) Criteria	Rationale for (a)(1) Determination
N/A.	N/A.	N/A.	N/A.	N/A.

Tributaries ((a)(2) waters):				
(a)(2) Name	(a)(2) Size		(a)(2) Criteria	Rationale for (a)(2) Determination
N/A.	N/A.	N/A.	N/A.	N/A.

Lakes and ponds, and impoundments of jurisdictional waters ((a)(3) waters):				
(a)(3) Name	(a)(3) Size		(a)(3) Criteria	Rationale for (a)(3) Determination
N/A.	N/A.	N/A.	N/A.	N/A.

Adjacent wetlands ((a)(4) waters):				
(a)(4) Name	(a)(4) Size		(a)(4) Criteria	Rationale for (a)(4) Determination
N/A.	N/A.	N/A.	N/A.	N/A.

¹ Map(s)/figure(s) are attached to the AJD provided to the requestor.

² If the navigable water is not subject to the ebb and flow of the tide or included on the District’s list of Rivers and Harbors Act Section 10 navigable waters list, do NOT use this document to make the determination. The District must continue to follow the procedure outlined in 33 CFR part 329.14 to make a Rivers and Harbors Act Section 10 navigability determination.

³ A stand-alone TNW determination is completed independently of a request for an AJD. A stand-alone TNW determination is conducted for a specific segment of river or stream or other type of waterbody, such as a lake, where upstream or downstream limits or lake borders are established. A stand-alone TNW determination should be completed following applicable guidance and should NOT be documented on the AJD Form.



**U.S. ARMY CORPS OF ENGINEERS
REGULATORY PROGRAM
APPROVED JURISDICTIONAL DETERMINATION FORM (INTERIM)
NAVIGABLE WATERS PROTECTION RULE**

D. Excluded Waters or Features

Excluded waters ((b)(1) – (b)(12)): ⁴				
Exclusion Name	Exclusion Size		Exclusion ⁵	Rationale for Exclusion Determination
MMA	0.2	acre(s)	(b)(5) Ditch that is not an (a)(1) or (a)(2) water, and those portions of a ditch constructed in an (a)(4) water that do not satisfy the conditions of (c)(1).	Review of historical aerial photos indicates channel was ditch as far back as 1985. Also meets b2 exclusion as non-adjacent wetland since area is located outside 100-year floodplain of nearby Knob Creek, a perennial stream.
MMB	0.5	acre(s)	(b)(5) Ditch that is not an (a)(1) or (a)(2) water, and those portions of a ditch constructed in an (a)(4) water that do not satisfy the conditions of (c)(1).	Review of historical aerial photos indicates channel was ditch as far back as 1985. Also meets b2 exclusion as non-adjacent wetland since area is located outside 100-year floodplain of nearby Knob Creek, a perennial stream.

III. SUPPORTING INFORMATION

A. Select/enter all resources that were used to aid in this determination and attach data/maps to this document and/or references/citations in the administrative record, as appropriate.

- Information submitted by, or on behalf of, the applicant/consultant: [See the file.](#)

This information **is** sufficient for purposes of this AJD.

Rationale: [See descriptions and review of all 3 features in this form and the report.](#)

- Data sheets prepared by the Corps: [Title\(s\) and/or date\(s\).](#)
- Photographs: [Select. Title\(s\) and/or date\(s\).](#)
- Corps site visit(s) conducted on: [Date\(s\).](#)
- Previous Jurisdictional Determinations (AJDs or PJDs): [ORM Number\(s\) and date\(s\).](#)
- Antecedent Precipitation Tool: [provide detailed discussion in Section III.B.](#)
- USDA NRCS Soil Survey: [Title\(s\) and/or date\(s\).](#)
- USFWS NWI maps: [Title\(s\) and/or date\(s\).](#)
- USGS topographic maps: [Title\(s\) and/or date\(s\).](#)

Other data sources used to aid in this determination:

⁴ Some excluded waters, such as (b)(2) and (b)(4), may not be specifically identified on the AJD form unless a requestor specifically asks a Corps district to do so. Corps districts may, in case-by-case instances, choose to identify some or all of these waters within the review area.

⁵ Because of the broad nature of the (b)(1) exclusion and in an effort to collect data on specific types of waters that would be covered by the (b)(1) exclusion, four sub-categories of (b)(1) exclusions were administratively created for the purposes of the AJD Form. These four sub-categories are not new exclusions, but are simply administrative distinctions and remain (b)(1) exclusions as defined by the NWPR.



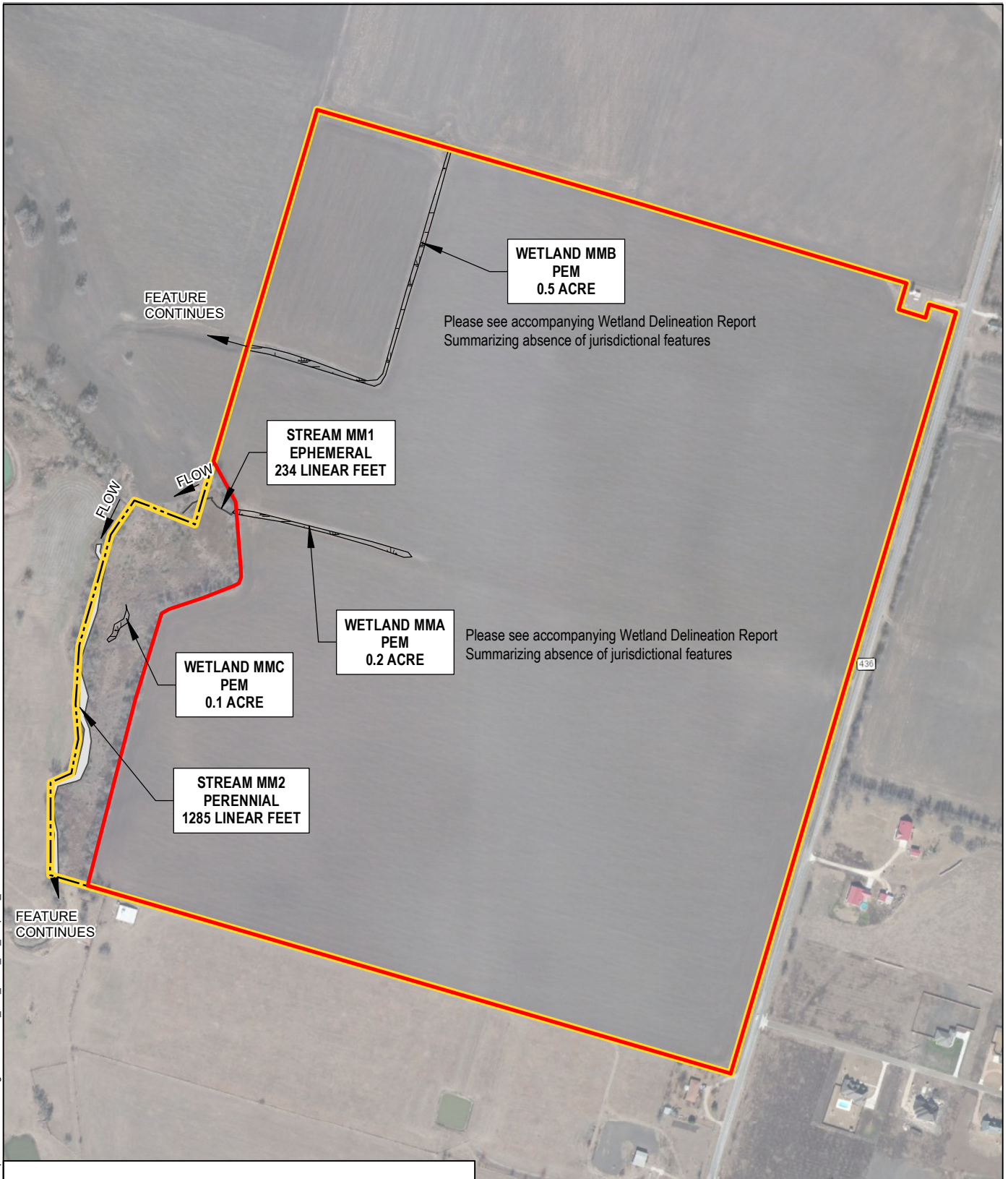
**U.S. ARMY CORPS OF ENGINEERS
REGULATORY PROGRAM
APPROVED JURISDICTIONAL DETERMINATION FORM (INTERIM)
NAVIGABLE WATERS PROTECTION RULE**

Data Source (select)	Name and/or date and other relevant information
USGS Sources	N/A.
USDA Sources	N/A.
NOAA Sources	N/A.
USACE Sources	N/A.
State/Local/Tribal Sources	N/A.
Other Sources	Reviewed FEMA floodplain maps to determine if either feature was within

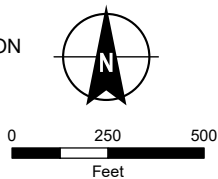
B. Typical year assessment(s): APT was executed for the day of the consultant's delineation report 2/22/2021. It revealed that that normal conditions existed. 30 day rolling total precipitation was near the 50th percentile and the previous month was wet during an average between wet/dry seasons. The ditch features, the report description of resources, on site photos and aerial photography back to 1985 all support conclusion that both are manmade ditches that contain wetlands associated with ag fields.

C. Additional comments to support AJD: N/A or provide additional discussion as appropriate.

GIS FILE PATH: C:\Users\mmartin\Desktop\Temple TX\Wetland_Figures\132900_021_0001_JD_Request_D1.mxd — USER: mmartin — LAST SAVED: 3/15/2021 11:36:26 PM



- ▶ FEATURE CONTINUES
- ▭ AREA OF REQUESTED JURISDICTIONAL DETERMINATION
- ▭ DELINEATED STREAM
- ▭ DELINEATED WETLAND
- ▭ STUDY AREA



NOTES

1. ALL LOCATIONS AND DIMENSIONS ARE APPROXIMATE.
2. DELINEATED WETLAND TYPES ARE BASED ON COWARDIN CLASSIFICATION.
3. BASE MAP SOURCE: ESRI



JURISDICTIONAL DETERMINATION REQUEST
BELL COUNTY, TEXAS

**JURISDICTIONAL DETERMINATION
REQUEST AREA**

SCALE: AS SHOWN
MARCH 2021

FIGURE 1